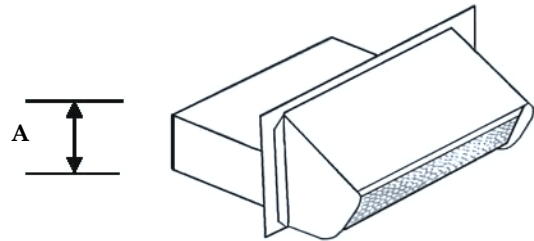


RECTANGULAR WALL VENT

3.25" x 10" Copper, Stainless Steel & Galvanized



A = 3.25 Inches

B = 10.00 Inches

KEY PRODUCT SPECIFICATIONS

Rectangular shape fits ducting for Range Hoods, Kitchen Venting or other exhaust needs. Standard is 3.25" x 10"

Low Hood Prevents Wind Induced Rattling and Rain Penetration

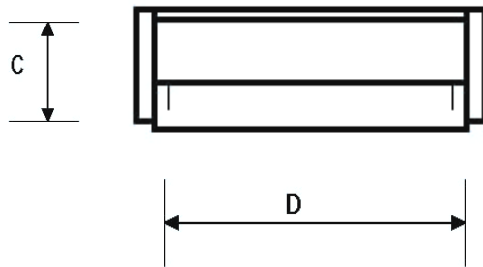
Mounting holes in each corner

Product Options

Material - Copper, Stainless, Galvanized & Black Powder Coated

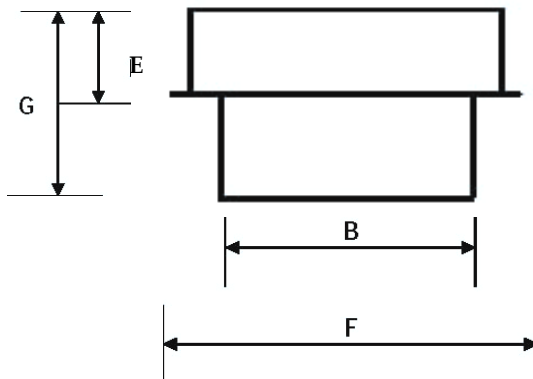
Damper is spring loaded and has a foam seal to ensure maximum noise & weather protection

Larger sizes 3.25" x 12" or 3.25"x 14" also available in Black Powder Coated only



C = 5.625 Inches

D = 11.00 Inches



E = 5.00 Inches

F = 12.75 Inches

G = 9.50 Inches

