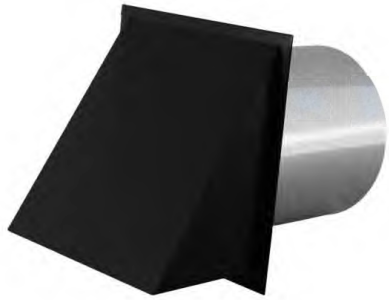


PRODUCT: POWDER COATED WALL VENT CAP

MATERIALS: POWDER COATED

SIZES: 3" - 14" | SCREEN ONLY, DAMPER ONLY, DAMPER & SCREEN



BLACK
SIZES: 3"- 14"



WHITE
SIZES: 3"- 14"



BROWN
SIZES: 3"- 14"

PRODUCT HIGHLIGHTS

THE WALL CAP IS IDEAL FOR USE WITH THE DAMPER ONLY DRYER VENTING, KITCHEN FAN EXHAUST, BATH FAN EXHAUST, FURNACE AIR INTAKE (SCREEN ONLY), WHOLE HOUSE VENTILATIONS, AND HRV'S. VENTS WITH DAMPERS COME STANDARD WITH A SPRING CLOSURE DAMPER AND WEATHER SEAL FOR INCREASED ENERGY

- SPRING CLOSE FOAM LINED DAMPERS
- 1/4" SCREEN
- 1/8" SCREEN AVAILABLE UPON REQUEST
- AVAILABLE MATERIAL INCLUDE;
 - GALVANIZED (G-90)
 - POWDER COATED HOOD, FLANGE & DAMPER (GALVANIZED)
- STANDARD COLORS:
 - BROWN, BLACK, OR WHITE
- CUSTOM COLOR MATCH AVAILABLE ON LARGE QUANTITY ORDERS
 - RAL COLOR CODE REQUIRED

PRODUCT: POWDER COATED WALL VENT CAP (P_WV_)

MATERIALS: POWDER COATED

SIZES: 3" - 14" | SCREEN ONLY, DAMPER ONLY, DAMPER & SCREEN

PRODUCT HIGHLIGHTS

THE WALL CAP IS IDEAL FOR USE WITH THE DAMPER ONLY DRYER VENTING, KITCHEN FAN EXHAUST, BATH FAN EXHAUST, FURNACE AIR INTAKE (SCREEN ONLY), WHOLE HOUSE VENTILATIONS, AND HRV'S. VENTS WITH DAMPERS COME STANDARD WITH A SPRING CLOSURE DAMPER AND WEATHER SEAL FOR INCREASED ENERGY

MATERIAL & COLOR KEY

SPECIFY DAMPER & SCREEN OPTIONS BEFORE PART

D = DAMPER ONLY (P_DWV#)

S = SCREEN ONLY (P_SWV#)

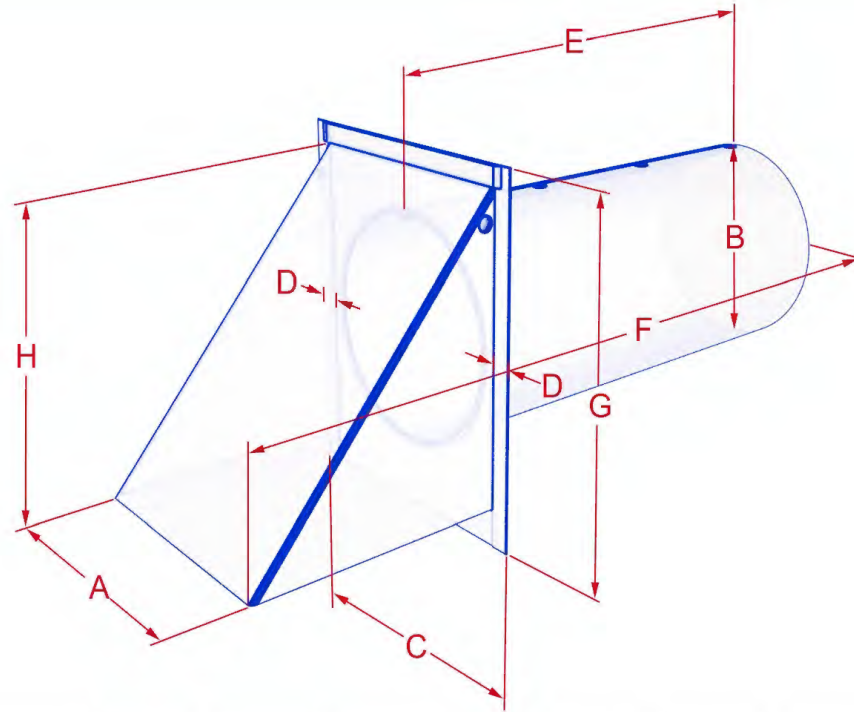
SD = DAMPER & SCREEN (P_SDWV#)

SPECIFY POWDER COATED COLORS AT END OF PART

BL = BLACK (P_WV#BL)

BR = BROWN (P_WV#BR)

W = WHITE (P_WV#W)



SKU	SIZE	A	B	C	D	E	F	G	H
P_WV3_	3"	5.00	3.00	6.00	.625	8.50	12.375	6.625	6.5
P_WV4_	4"	5.00	4.00	6.00	.625	8.50	12.375	6.625	6.5
P_WV5_	5"	6.00	5.00	7.00	.625	8.50	12.25	7.00	6.125
P_WV6_	6"	7.0625	6.00	8.00	.625	8.50	12.75	8.00	7.375
P_WV7_	7"	9.375	7.00	9.00	.625	8.50	13.75	9.00	7.875
P_WV8_	8"	9.375	8.00	11.00	.625	8.50	13.625	11.00	9.812
P_WV10_	10"	12.00	10.00	13.00	.625	8.50	15.00	13.50	11.812
P_WV12_	12"	13.00	12.00	14.00	.625	8.50	17.25	14.5625	13.375
P_WV14_	14"	15.00	14.00	16.00	.625	8.50	19.50	16.75	15.00